

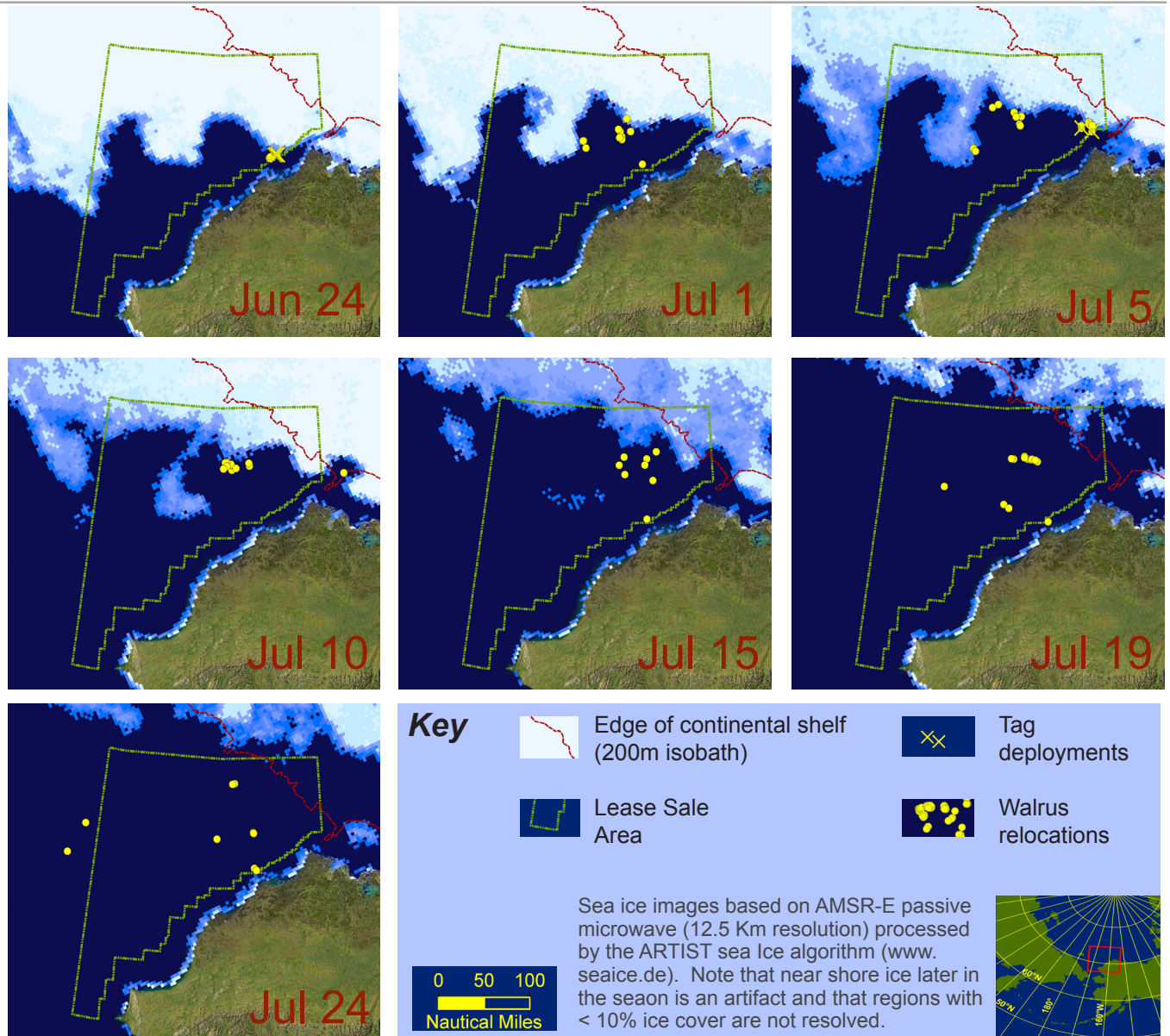
Walrus Radio-Tagging in the Chukchi Sea 2007

We tagged 9 walrus with satellite radio-tags near Barrow during the 2007 ice retreat to better understand walrus habitat use in the Chukchi Sea. Radio-tags were attached to walrus using a crossbow from a small boat. Sea ice retreated rapidly along the northwest coast of Alaska this spring and was blown far offshore from sustained easterly winds during our tagging work (June 20 – July 4). Some tagged walrus swam in the opposite direction of the receding ice to occupy very scattered ice floes far south of the main ice edge.

Radio-tagged walrus



Walrus Movement



For further information contact Chad Jay (907-786-7414) or Tony Fischbach (907-786-7145) at USGS Alaska Science Center, or visit our website at: <http://alaska.usgs.gov/science/biology/walrus/>.

Radio-tags were provided by US Fish & Wildlife Service. North Slope Borough, Department of Wildlife Management, kindly provided field support and assistance.

