

**Alaska DHSS – Division of Public Assistance
Internal Performance Measures: Year-to-Date Performance**

Timely Application Actions – SFY24 YTD			
Program	Percent Timely	Target	Difference
SNAP Expedite applications	46.2%	95.5%	-49.3%
SNAP Initial applications	25.7%	97.0%	-71.3%
SNAP Recert applications	21.2%	99.7%	-78.5%
ATAP Initial applications	33.0%	90.0%	-57.0%
ATAP Review applications	75.3%	98.0%	-22.7%
Medicaid Initial applications	47.6%	92.0%	-44.4%
Medicaid Review applications	51.1%	92.0%	-40.9%
APA Initial applications	31.6%	70.0%	-38.4%
APA Review applications	56.7%	96.0%	-39.3%
GA Initial applications	47.5%	99.7%	-52.2%

Application Decision Cycle Time – SFY24 YTD			
Program	Average Days	Target	Difference
SNAP	64	17	-47.4%
ATAP	60	19	-40.6%
Medicaid without APA	99	13	-86.2%
Medicaid with APA	80	52	-27.8%
APA	97	68	-28.8%
SB	86	30	-55.5%

Timely Benefit Issuance – SFY24 YTD			
Program	Percent Timely	Target	Difference
SNAP	81.9%	93.0%	-11.1%
Alaska Temporary Assistance Program	80.8%	91.0%	-10.2%
Medicaid	93.8%	94.0%	-0.2%
Adult Public Assistance	96.9%	97.0%	-0.1%

Work Services Performance Measures – SFY24 YTD			
Performance Measure	Percent Meeting		
	Measure	Target	Difference
Obtain employment within 90 days	30.0%	27.0%	3.0%
Cases closed with earnings	33.0%	51.0%	-18.0%
Cases closed and not returned	91.0%	90.0%	1.0%
All families work participation rate	34.0%	50.0%	-16.0%
Two-parent work participation rate	45.0%	90.0%	-45.0%
Job Development	5.0%	10.0%	-5.0%

<i>Timely Actions current through</i>	Dec-23
<i>Application Decision Cycle Time current through</i>	Dec-23
<i>Timely Benefit Issuance current through</i>	Nov-23
<i>Work Services Perf Measures current through</i>	Dec-23

**Alaska DHSS – Division of Public Assistance
Internal Performance Measures: Year-to-Date Performance**

Timely Application Actions							
Program	SFY18	SFY19	SFY20	SFY21	SFY22	SFY23	SFY24YTD
SNAP Expedite applications	79.7%	87.0%	92.9%	71.4%	82.6%	42.4%	46.2%
SNAP Initial applications	86.9%	91.5%	92.6%	61.5%	78.9%	34.4%	25.7%
SNAP Recert applications	68.4%	80.9%	92.0%	53.7%	68.0%	19.3%	21.2%
ATAP Initial applications	87.6%	90.6%	94.1%	67.7%	83.9%	38.5%	33.0%
ATAP Review applications	88.0%	91.6%	94.9%	65.1%	81.3%	75.1%	75.3%
Medicaid Initial applications	53.7%	48.6%	70.6%	53.3%	55.9%	38.9%	47.6%
Medicaid Review applications	83.5%	79.6%	88.5%	69.9%	62.0%	42.7%	51.1%
APA Initial applications	73.0%	81.4%	84.6%	64.0%	78.8%	36.2%	31.6%
APA Review applications	89.5%	93.7%	97.5%	60.7%	81.9%	31.6%	56.7%
GA Initial applications	91.0%	95.1%	96.5%	77.4%	88.3%	54.0%	47.5%

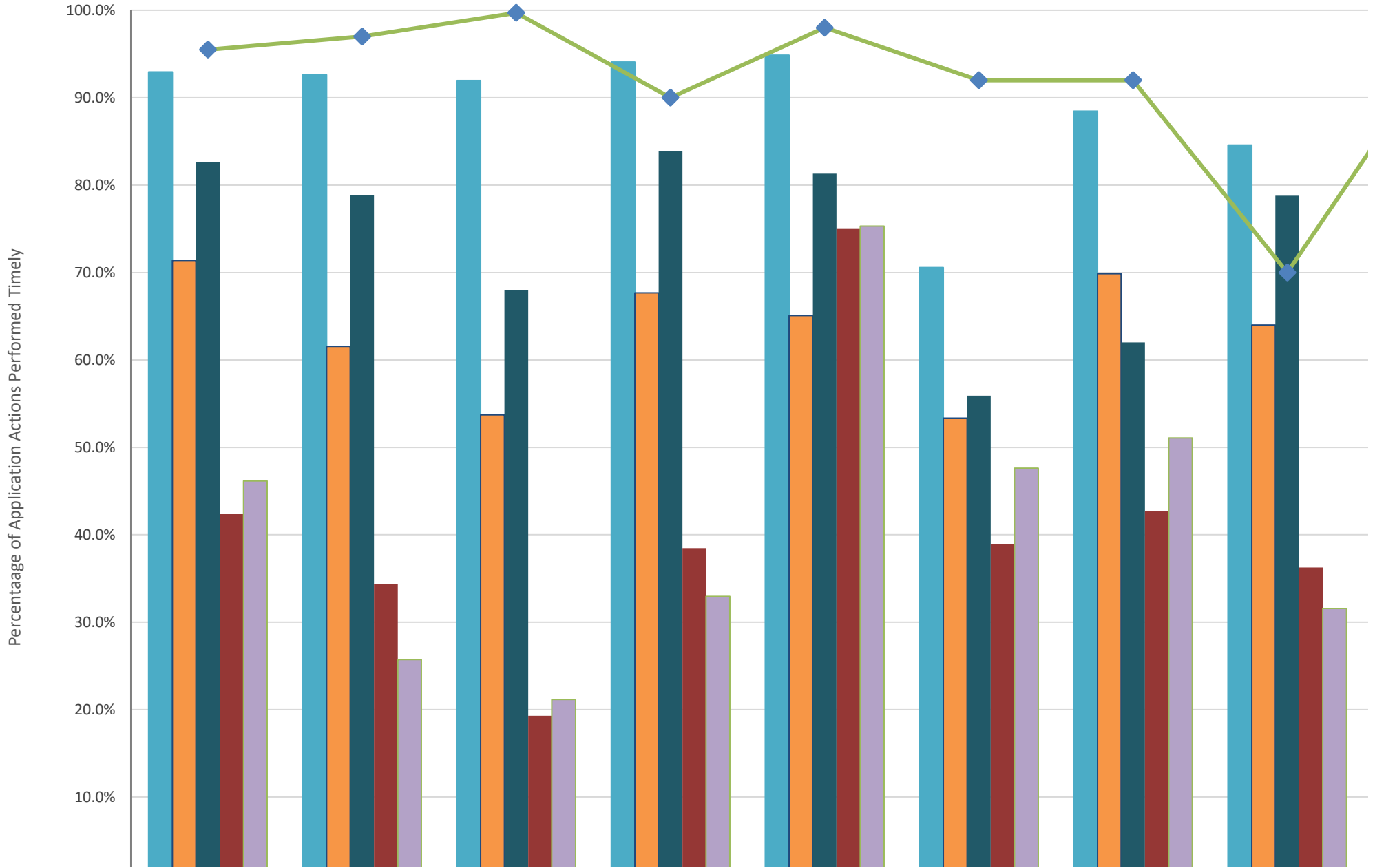
Application Decision Cycle Time (Days)							
Program	SFY18	SFY19	SFY20	SFY21	SFY22	SFY23	SFY24YTD
SNAP	18	12	9	20	25	57	64
ATAP	19	12	14	23	20	44	60
Medicaid without APA	169	171	34	29	57	87	99
Medicaid with APA	65	62	60	59	79	97	80
APA	43	29	31	24	36	64	97
SB	-	20	28	35	30	54	86

Timely Ongoing Benefit Issuance							
Program	SFY18	SFY19	SFY20	SFY21	SFY22	SFY23	SFY24YTD
SNAP	93.7%	93.0%	95.3%	93.5%	98.4%	83.8%	81.9%
ATAP	91.8%	92.2%	92.4%	91.3%	94.7%	82.2%	80.8%
Medicaid	93.8%	94.6%	95.5%	94.4%	96.9%	96.2%	93.8%
APA	97.2%	97.7%	97.9%	97.1%	98.9%	98.4%	96.9%

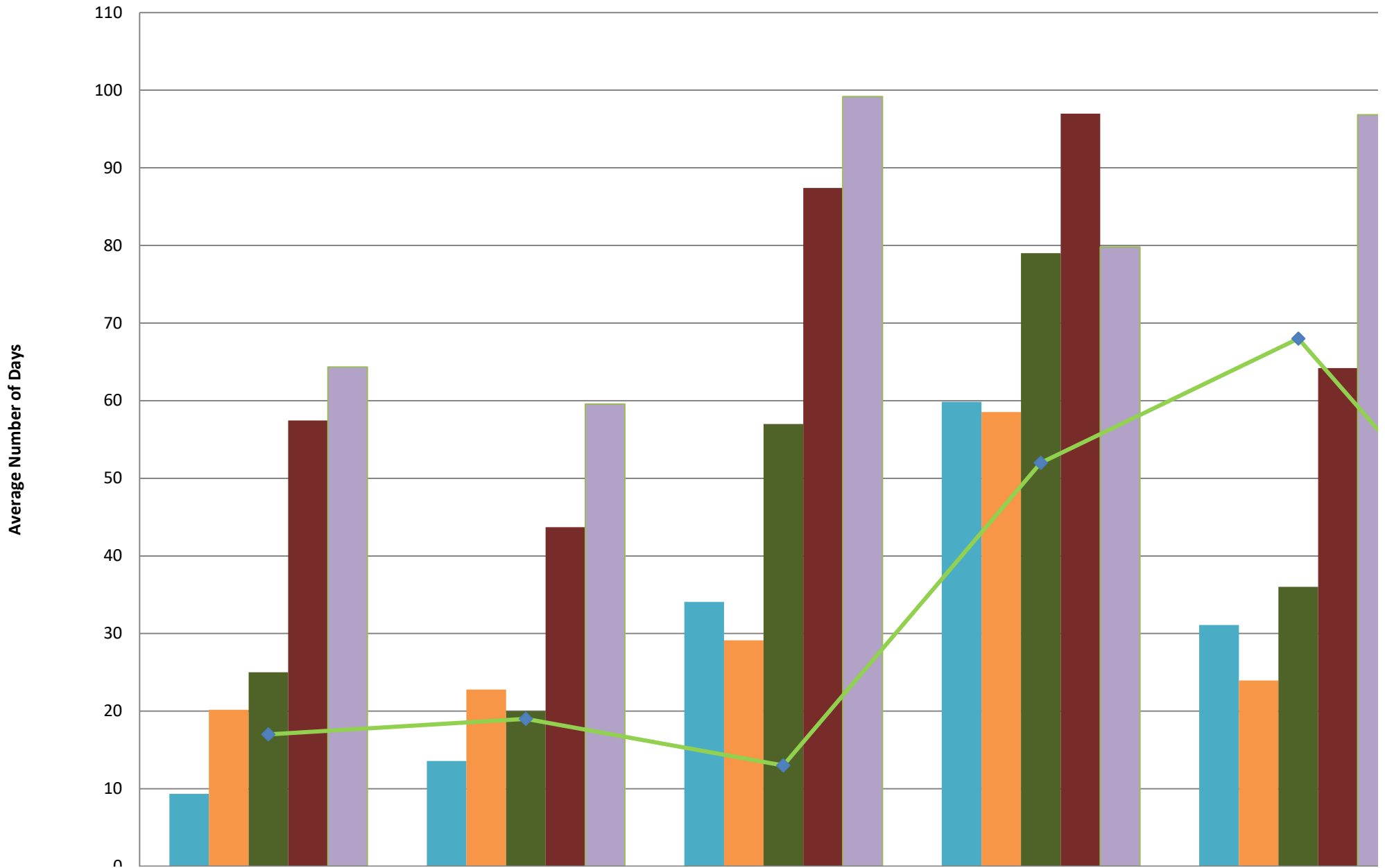
Work Services Performance Measures							
Performance Measure	SFY18	SFY19	SFY20	SFY21	SFY22	SFY23	SFY24YTD
Obtain employment within 90 days	32.0%	31.0%	27.0%	21.0%	23.0%	29.0%	30.0%
Cases closed with earnings	44.0%	36.0%	37.0%	27.0%	25.0%	31.0%	33.0%
Cases closed and not returned	85.0%	83.0%	83.0%	85.0%	95.0%	91.0%	91.0%
All families work participation rate	42.0%	49.0%	43.0%	32.0%	29.0%	33.0%	34.0%
Two-parent work participation rate	51.0%	62.0%	56.0%	42.0%	35.0%	43.0%	45.0%
Job Development [#]	-	14.0%	14.0%	7.0%	4.0%	6.0%	5.0%

[#] This performance measure started in SFY19

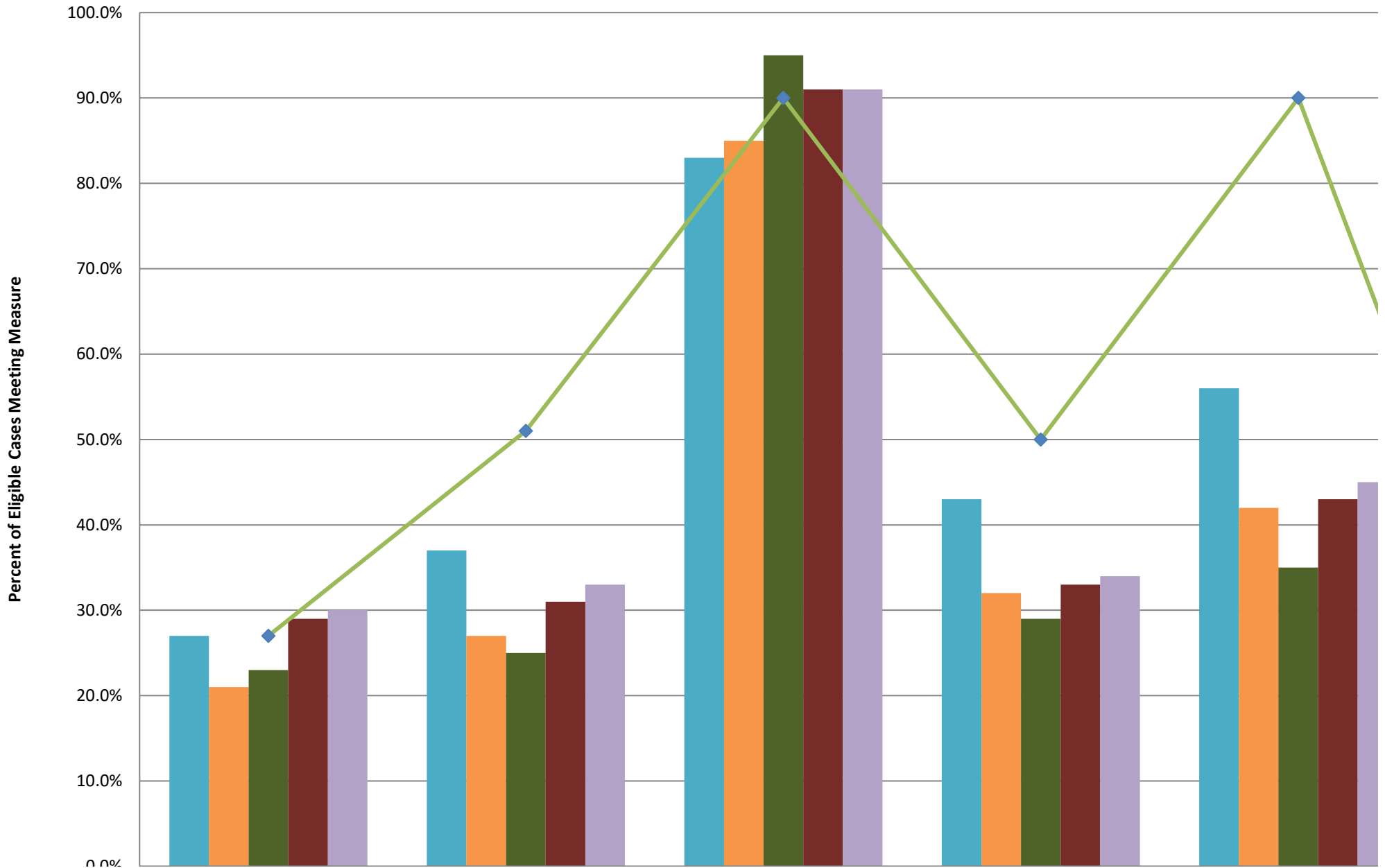
Timely Application Actions Performance by Program and Applcaton Type



Application Cycle Time Performance



Work Services Performance Measure



Timely Benefit Issuance Performance by Program

