

Come to know the true North

at the **ANCHORAGE MUSEUM** through
the new Rasmuson Wing and Art of the North Galleries

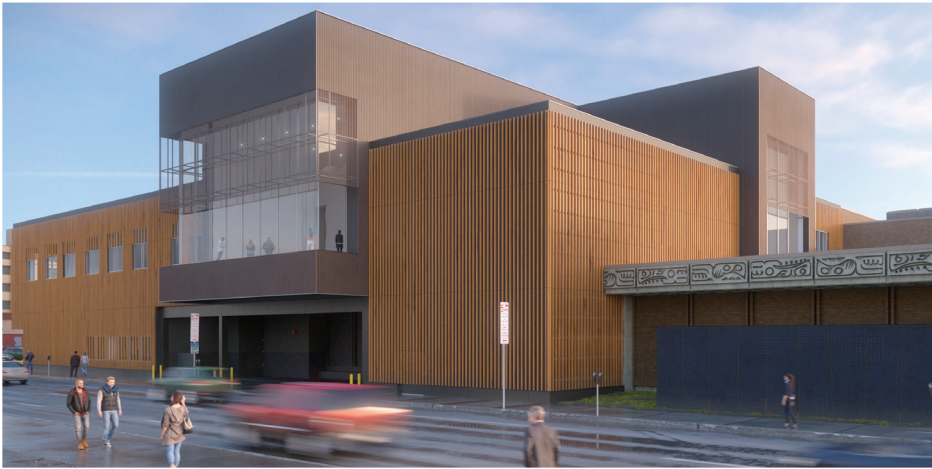


Image credits: Exteriors, Kevin Smith; Renderings, McCool Carlson Green Architects

A NORTHERN FOCUS

The Anchorage Museum is pleased to open a new wing, a renovated atrium and a re-envisioned *Alaska* exhibition. With these spaces, the museum has dedicated galleries for its mission to tell the story of the North through art, design, history, science and culture. It is a world-class facility with the ability to have thousands of objects on view to the public at any one time.

The museum plays an important role in building a place-based narrative for Anchorage, Alaska, and the Arctic that speaks to contemporary conditions and the future, as well as centuries of history and local knowledge that inform our past and present.

The new Rasmuson Wing offers an opportunity to look toward the future with optimism, to connect with more people in Alaska and around the world, and to position the museum as a leading institution of the North with a focus on Northern people and ideas. The art galleries create a compelling narrative for the North through images, furthering the museum's mission of expanding perceptions of the North, its landscape and cultures.



NEW AND IMPROVED

THE NEW RASMUSON WING

- Provides greater public access to the museum's art collection
- Creates dedicated physical space for each arm of the museum's mission — art, design, history, science, culture
- Tells the story of the North and Alaska through art that depicts its landscape and people
- Introduces museum visitors to Alaska and the North through a variety of engaging and relevant museum experiences
- Connects people, expands perspectives, and encourages global dialogue about the North and its distinct environment



ART OF THE NORTH GALLERIES

The Art of the North galleries in the museum's new wing present the museum's art collection from the perspectives of American art and an international North.

Paintings, sculpture, photography, video and other media offer varied perceptions of the Northern landscape and wilderness through historical and contemporary depictions of both land and people.

These new galleries deliver a compelling narrative for the North. Presented are documentary works from expedition artists, along with Romantic landscapes by 19th and 20th century painters, and works by contemporary artists for whom landscape is a place in transition, at risk and altered by man.

The indigenous perspective is a critical part of the North. Museums have long segregated indigenous artwork from other traditional, modern and contemporary works. With this installation, the two will be combined into one narrative of the North.

GRAND OPENING WEEKEND / SEPT. 15-17, 2017

The Rasmuson Wing opens to the public Friday, Sept. 15, with extended hours and discounted admission from 6 to 9 p.m. This event marks the completion of the museum's latest expansion project and the grand opening of several new spaces. The Rasmuson Wing and *Art of the North* galleries, the *Alaska* exhibition in the former Alaska gallery space, a renovated atrium with Muse café kiosk, a larger Discovery Center, an outdoor patio, and Patrons Lounge are among the changes visitors will see.

Grand Opening Weekend is sponsored by KTUU Ch 2 News



The Rasmuson Wing expands the amount of space dedicated to the museum's art collection from 3,000 to approximately 25,000-square-feet, featuring more than 200 works from the museum's permanent collection.

Museums are public spaces, places for shared experiences and activities. One of our most active spaces is the Mary Louise Rasmuson atrium, which has for decades hosted events from opening receptions to silent discos. With our visitors and the future in mind, this space has been modernized with updated electrical, flooring and staircase, data access and connections to other parts of the museum to make it accessible to everyone. The water feature has been removed to create a safer environment, and *Ice Walls*, the sculpture that sat atop the water feature, is relocated to the outdoor patio on the museum's east side. This patio has been transformed into a space for public programs, stargazing, outdoor film screenings, private receptions and outdoor education.



The \$24 million expansion is funded entirely by private dollars, including \$12 million gifts from both the Rasmuson family and the Rasmuson Foundation.

ARCHITECT
McCool Carlson Green Architects
(Anchorage)

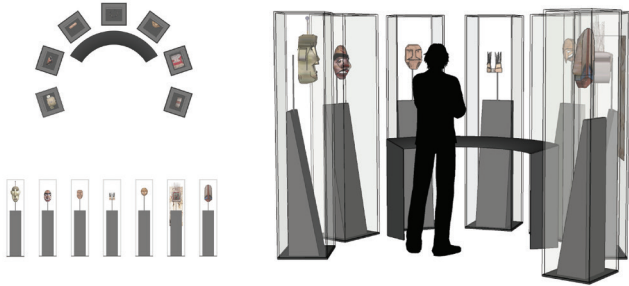
GENERAL CONTRACTOR
Davis Constructors & Engineers, Inc.
(Anchorage)

THE ALASKA EXHIBITION

Updating the museum's history gallery 30 years after it first opened is an important project for the museum and one that has been in the planning for many years. The project represents new thinking about the ways museums represent culture and history, posing critical questions rather than assuming answers.



The way we display objects and the way we include multiple voices and perspectives is vital to telling the stories and history of Alaska. Also important is to recognize how the past continues to speak to contemporary issues, to look at the changes in Alaska's population and landscape, and to encourage critical thinking.



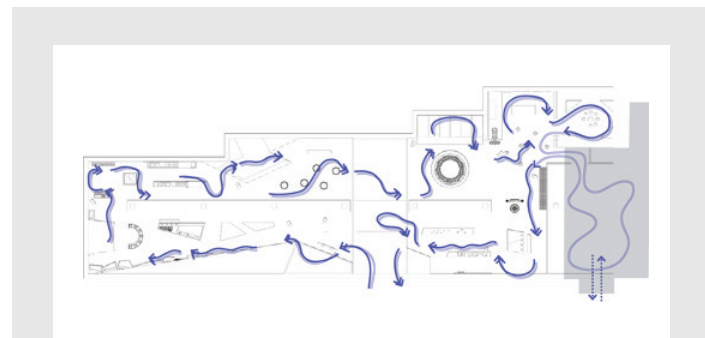
The process included curators, conservators, exhibition designers, artists, historians, community members, educators, docents, museum visitors and many others.

The new *Alaska* exhibition tells the story of Alaska as it reveals the identity of Alaska and its people through multiple voices and perspectives reflecting the ingenuity, technology, ways of knowing and intimate understanding of the landscape that have allowed people to survive and thrive across the North. On view are more than 400 objects from the Anchorage Museum's collection, as well as several acquired or on loan especially for this new exhibition.

Visitors will experience immersive installations with elements of sculpture, video and interactivity, soundscapes, moving images and cinematic narratives with participative moments.

At the heart of the exhibition is a central space featuring the people and stories of Alaska through a growing archive of biographies and images. The space is also a gathering place for artists and performances, school groups, readings, storytelling and special events. Visitors may also explore a complementary gallery for temporary exhibitions related to Northern narratives.

Together, these elements invite visitors to consider for themselves what Alaska really is: what is real, what is myth, and what lives in the space in between.



The visitor journey follows an intuitive clockwise path that begins and ends at the same point. Visitors move forward in time, exploring themes and absorbing Alaska's history as it relates to contemporary issues.

Included with the renovation is a new gallery space—the Northern Narratives gallery, which presents aspects of Alaska and the North through art, design, history, science and culture.

